



WORLD'S BEST ALLOY BULLBARS

The tough Nissan Patrol GU demands the best accessories, and ECB have the perfect products for the task. Whether you're cruising the open road or engaging in some recreational rough stuff, wherever your Nissan Patrol takes you, ECB has the best frontal protection to add style and sports appeal combined with safety and protection.

When it comes to protecting your Nissan Patrol, it's worth remembering that only the best will do. Genuine ECB products are manufactured from hi-tensile, structural grades of aluminium, ensuring the best performance, strength and protection.

From the sporty 76mm Nudge Bar through to the unmatched strength and reliability of an ECB Big Tube™ Winch Bar, ECB has a range of frontal protection products that are styled to perfectly complement the strong design of your Nissan Patrol and they're tough enough to withstand almost anything the urban jungle or nature can dish out.

Not only do ECB protection bars meet Australian Design Rules - each one is also covered by ECB's exclusive Lifetime Warranty for complete peace of mind.

East Coast Bullbars are the Strongest Built, Best Engineered and Australian Made, all components that are required to be the World's Best Alloy Bullbars

AUSTRALIAN MADE



Nissan Patrol GU



- Bumper Replacement Design
- Low Mount Winch Compatibility
- 6mm One Piece Channel
- 76mm Centre & 63mm Shoulder Tubes
- LED Indicator/Park Lights
- Optional ECB Bumper Lights

Big Tube™ Winch Bar - Silver Hammertone Powdercoated Alloy Finish Shown

For the best in frontal protection, you can't go past the strength, quality and style of the ECB Big Tube™ Winch Bar for the Nissan Patrol. Manufactured from hi-tensile, structural grade alloy, this bumper replacement design is engineered to accommodate up to 9,500lb Warn or Mean Mother low mount winches and is attached to the chassis of the using a 6mm thick plasma cut steel mounting system. The hi-tensile, tapered, one-piece bumper incorporates LED indicator/park light combinations, air directional cooling vents and trimmed access points for winch controls. Fully gusseted 63mm x 4.2mm thick shoulder pipes, 76mm x 4.75mm thick centre tube, 6mm thick gusseted lower protection skirt, spotlight mounting provisions and an aerial bracket all come as standard features. To complete a great looking performance product, choose from ECB's range of premium, low maintenance powdercoated finishes, which provide a durable cost saving alternative to polishing.



- Bumper Replacement Design
- 6mm One Piece Channel
- 76mm Centre & 63mm Shoulder Tubes
- Fully Welded Gussets
- LED Indicator/Park Lights
- Optional ECB Bumper Lights

Big Tube™ Bar - Mirror Polished Alloy Finish Shown

The ECB Big Tube™ Bar is manufactured from hi-tensile, structural grade alloy offering the best protection possible while increasing the approach angle utilising a full bumper replacement style fitment. The tapered 6mm thick one-piece bumper section incorporates a full width, braced 6mm thick lower protection skirt whilst a specifically designed 6mm thick plasma cut steel mounting system ensures a neat and sturdy fitment. Standard features of this bar include LED indicator/park light combinations, optional fog lights, air directional cooling vents, access to the original tow points, 76mm x 4.75mm thick centre tube and 63mm x 4.2mm thick gusseted shoulder pipes. To easily mount accessories, this Big Tube™ Bar provides an aerial mounting tab and also spotlight mounting provisions to cater for your additional lighting requirements.

Features:



Aerial Tab



Fully Welded Gussets



One Piece Channel

Finish Options:



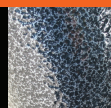
Black Ripple



Polished



Silver Ripple



Silver Hammertone

Contact the ECB National Customer Service Centre for your local ECB Outlet
FREE CALL: 1800 069 145 or visit our site: www.ecb.com.au

WORLD'S BEST ALLOY BULLBARS

- ECB's Lifetime Warranty
- Short lead times, all products are manufactured on site
- ADR & Air Bag Compliant
- Light in weight, save on fuel, wear and tear
- Will not void your new car warranty
- Manufactured in Australia
- The largest range of alloy frontal protection products in the world
- Over 40 Years Experience in the Industry
- Premium range of Finishes

AUSTRALIAN MADE

Nissan Patrol GU



- Bumper Protection
- Grille & Radiator Protection
- Spotlight Mounting Tabs
- 63mm Hi-Tensile Alloy Tubing
- 4.2mm Thick Extruded Tube
- Mandrel Bending Tube Process

63mm Series 2 Nudge Bar - Mirror Polished Alloy Finish Shown

Great sports styling, bumper, radiator and grille protection are just a few of the features of this modern and functional 63mm Series 2 Nudge Bar. Formed from hi-tensile alloy tubing with a lower centre tube for maximum radiator protection, this Nudge Bar has equal or better strength than poor quality, thinner sectioned, imported stainless steel products and is up to 50% lighter in weight. Spotlight mounting provisions together with a choice of finishes are standard inclusions.



- Bumper & Radiator Protection
- Spotlight Mounting Tabs
- 76mm Hi-Tensile Alloy Tubing
- 4.75mm Thick Extruded Tube
- Mandrel Bending Tube Process

76mm Nudge Bar - Mirror Polished Alloy Finish Shown

Impact protection is just one of the benefits of this eye-catching 76mm Nudge Bar. Designed and manufactured in Australia to suit our harsh Australian conditions, this nudge bar is formed from hi-tensile alloy tubing and will never corrode or rust. This sporty, sleekly styled 76mm Nudge Bar provides premium strength without the extra weight of steel nudge bars. This nudge bar comes complete with spotlight mounting tabs and the exclusive ECB Lifetime Warranty.

**'The Perfect Balance Between
Strength & Weight'**



Finish Options

Black
Ripple

Polished

Silver
Ripple

Silver
Hammer-tone

Contact the ECB National Customer Service Centre for your local ECB Outlet
FREE CALL: 1800 069 145 or visit our site: www.ecb.com.au